

A composite image featuring a woman's face on the right and a microscope on the left, set against a blue background with faint chemical structures and molecular diagrams.

**We Bring Your Innovative
Concepts to Life**



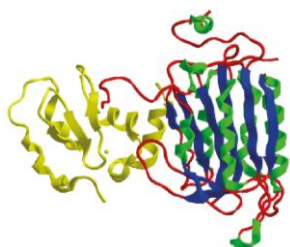
Our 360° offer - For Making Clinical trials More Successful



in silico
screening

Identification of
active molecules

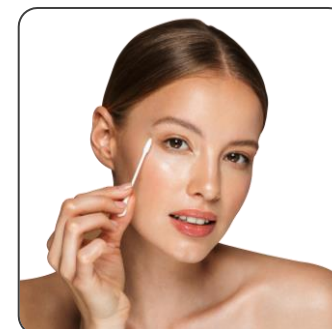
Similarity searching – LBVS/SBVS
in silico testing



in vitro
assay

Proof-of concept

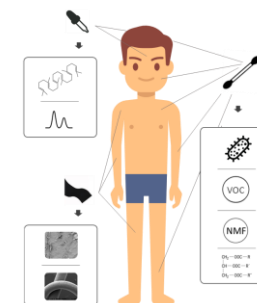
Proof-of-concept - Benchmarking –
Repositioning - Transcriptomic &
functional screening & profiling



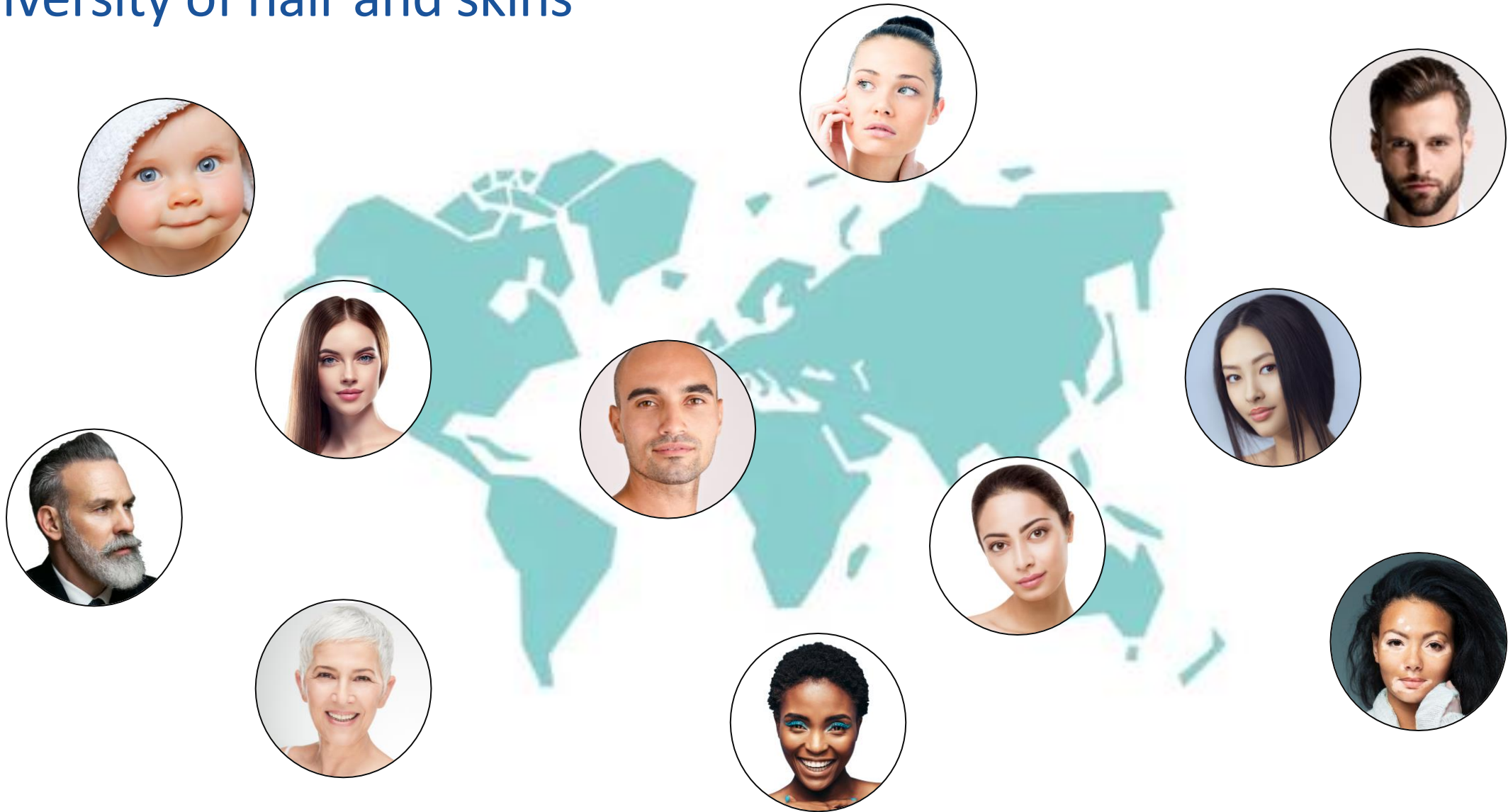
clinical
bioanalysis

Advanced claim support

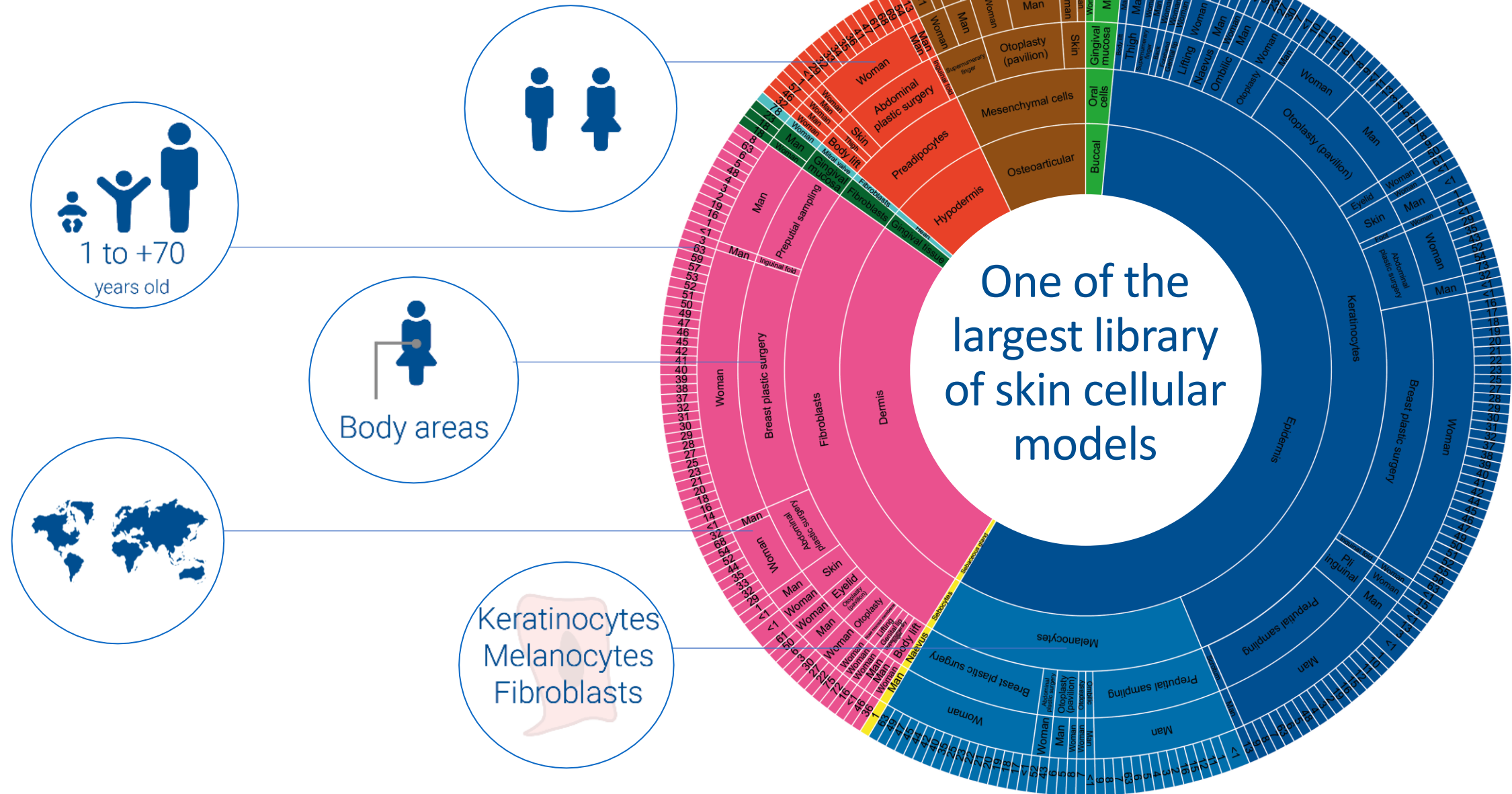
Non-invasive clinical sampling
Clinical bioanalysis



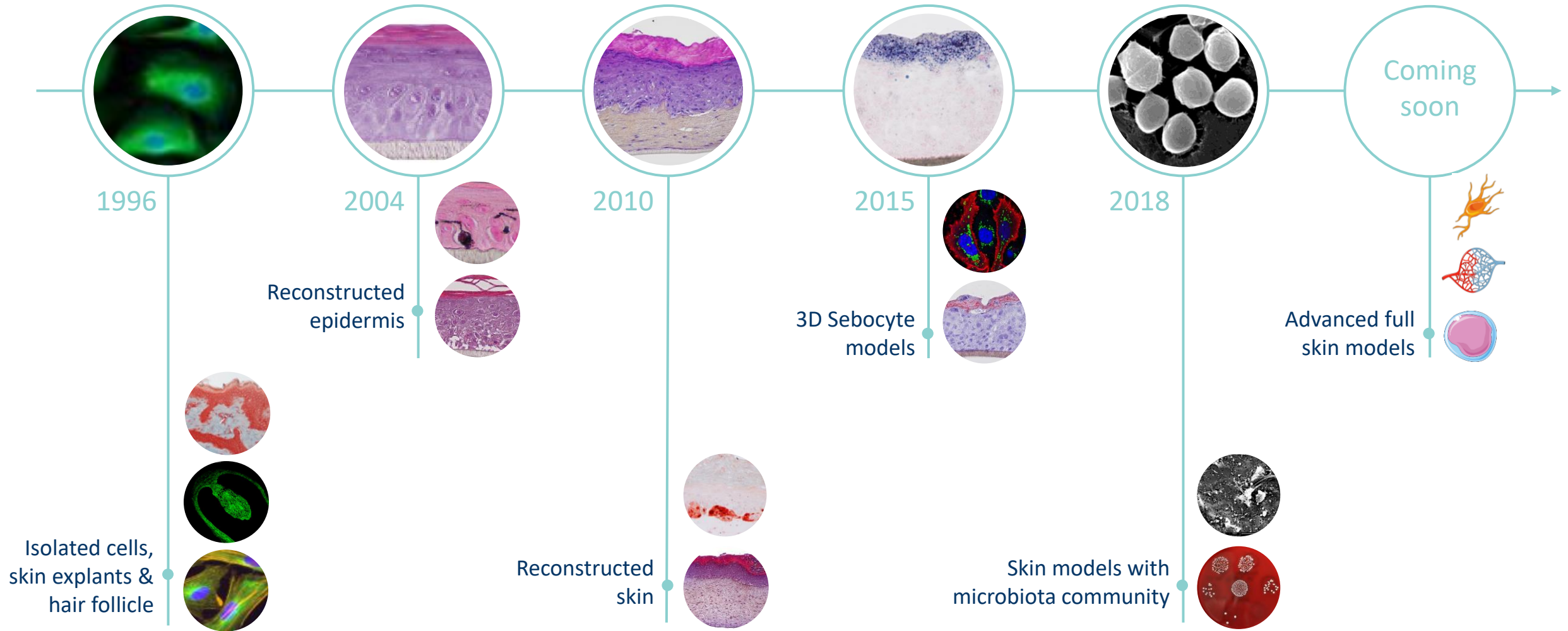
Diversity of hair and skins



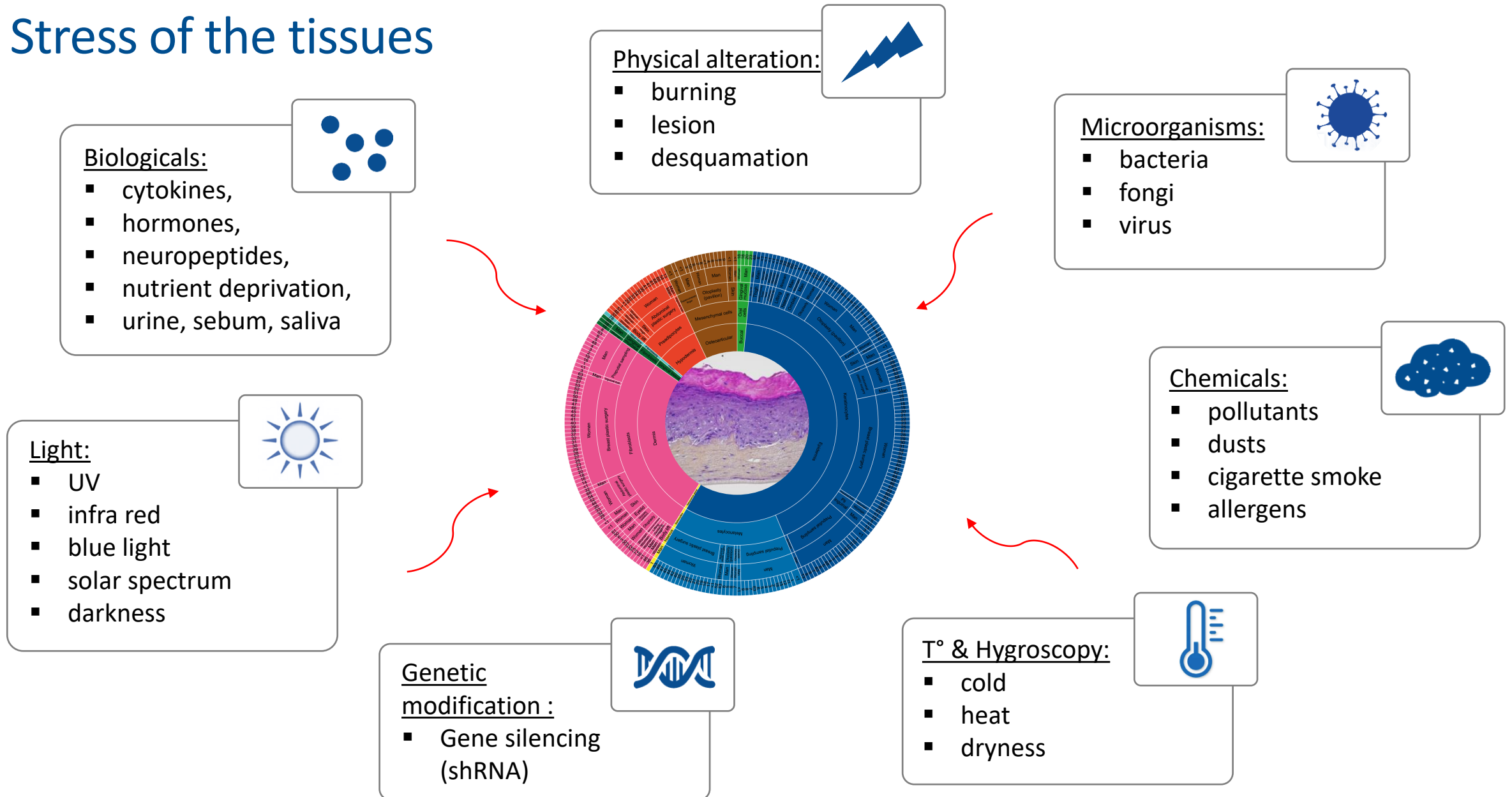
A Cell Bank of 20 000 vials



Bioalternatives' innovation in skin reconstructed models



Stress of the tissues



We develop your customized tissue to predict your product efficacy

SKIN BARRIER & HYDRATION

PIGMENTATION

SKIN MICROBIOME

OILY SKIN & ACNE

EXPOSOME

IMMUNE-INFLAMMATION & SENSITIVE SKIN

ATOPIC DERMATITIS

AND MORE:

Psoriasis, wound healing, infections, melanoma, vitiligo,
hair pigmentation & canities

Analytical advanced technologies



Analytical services

Sample preparation & extraction
GC-MS, LC-MS, LC-MSMS, UHPLC/HRMS



Immunoassays

ELISA – Western blot – Flow cytometry – ICC –
FRET – immunofluorescence



Functional assays

Cytotoxicity – proliferation – migration –
function barrier



In silico assays

Virtual screening, docking,
phytochemical profiling



Transcriptome analysis

mRNA, miRNA, siRNA –
qPCR arrays – microarrays



Radiobiochemistry

Detection & quantification of
radiolabeled protein (phosphorImager)



Microbiology assays

Enumeration, Identification, Grow, MIC,
Bacterial resistance



Microscopy & bioimaging

Histology – immunolabeling –
Light microscopy – Confocal – MEB/MET

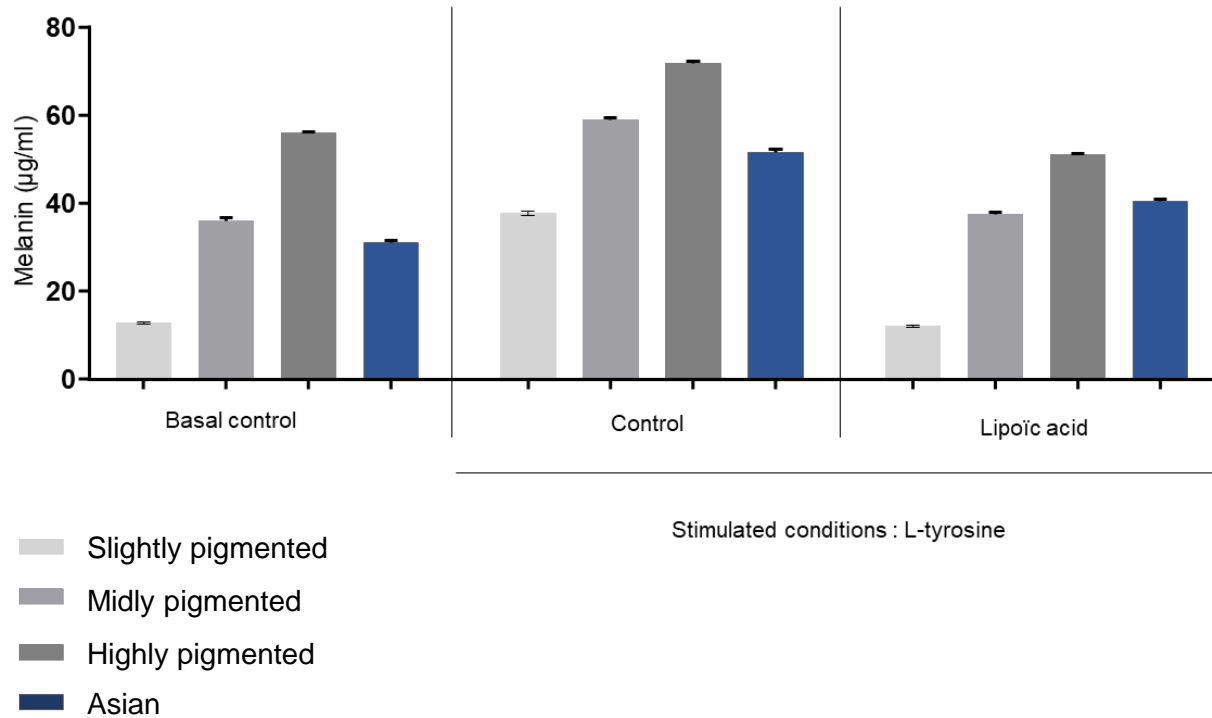


In-Tubo – biochemistry

Absorbance – fluorescence –
chemiluminescence –

Asian models

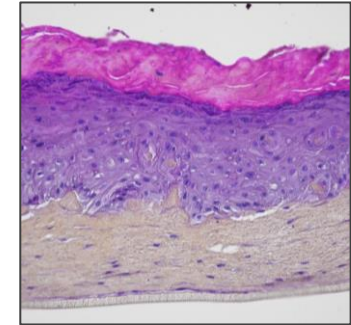
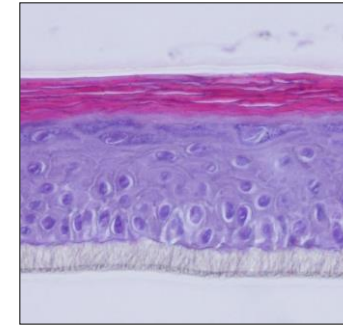
> 2D Asian models



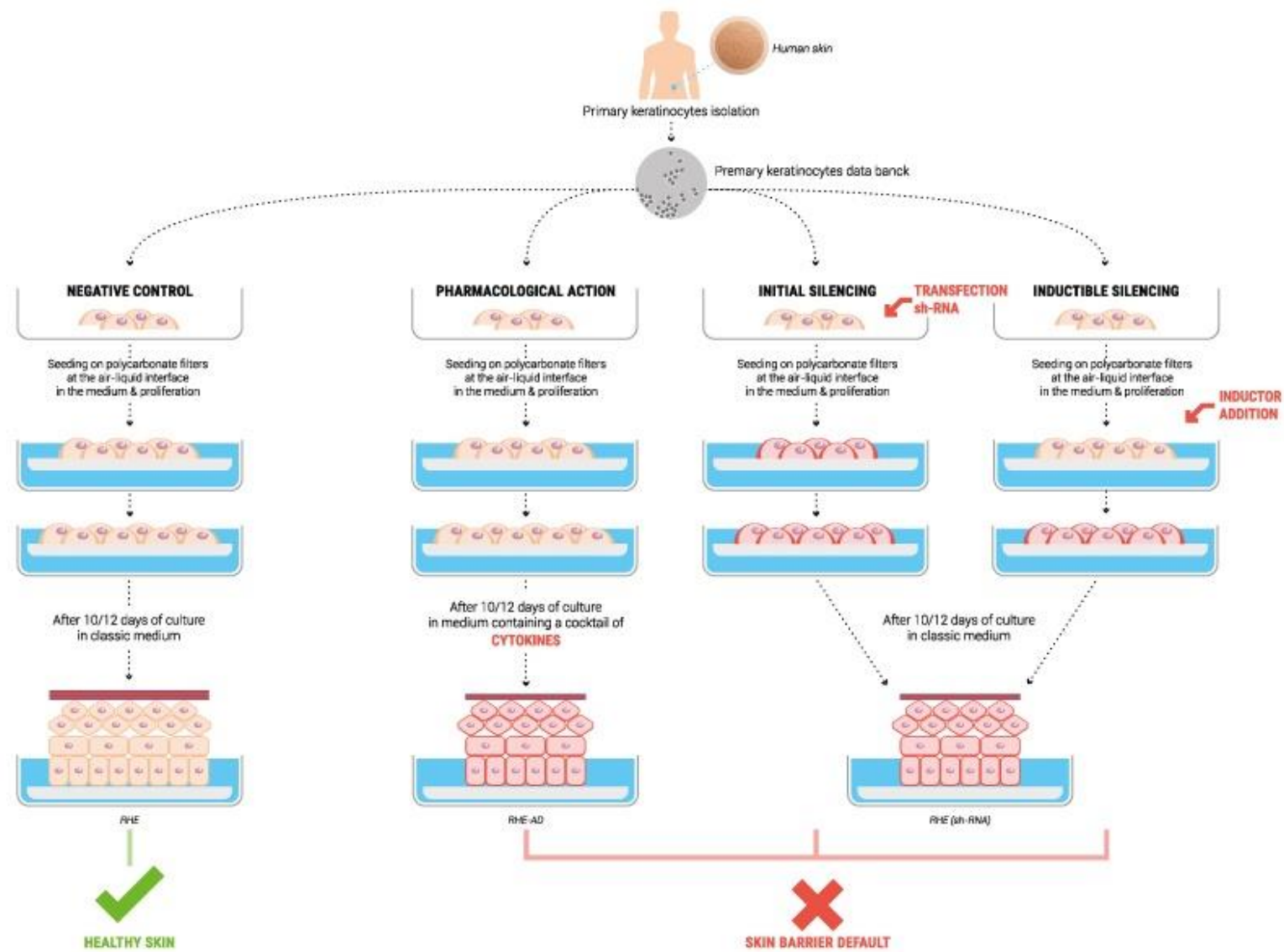
- > Stimulation of melanin synthesis (Basal, pro-pigmenting agents)
- > Inhibition of melanin synthesis (L-Tyrosine stimulation, whitening agents)

> 3D Asian models

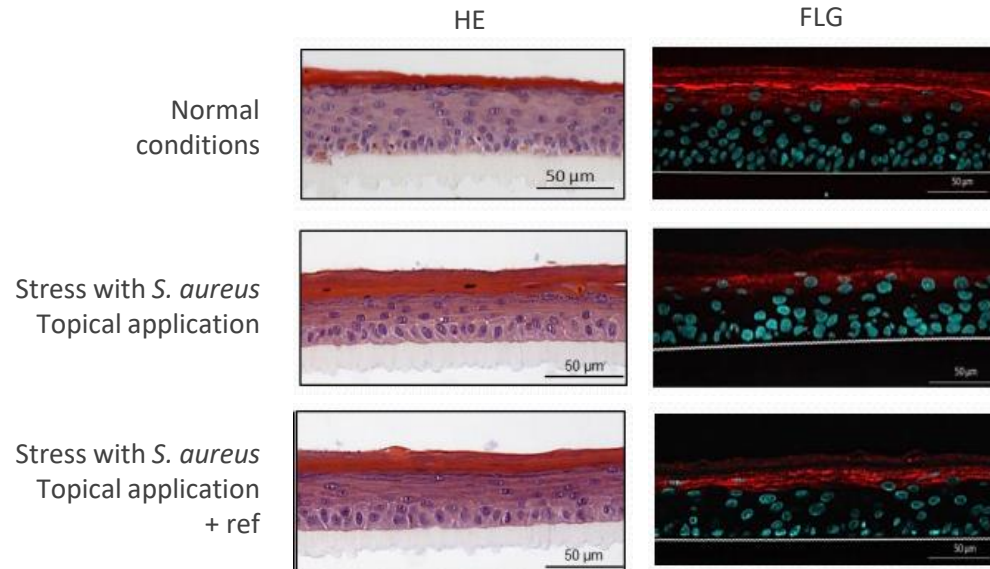
Reconstructed epidermis & skin



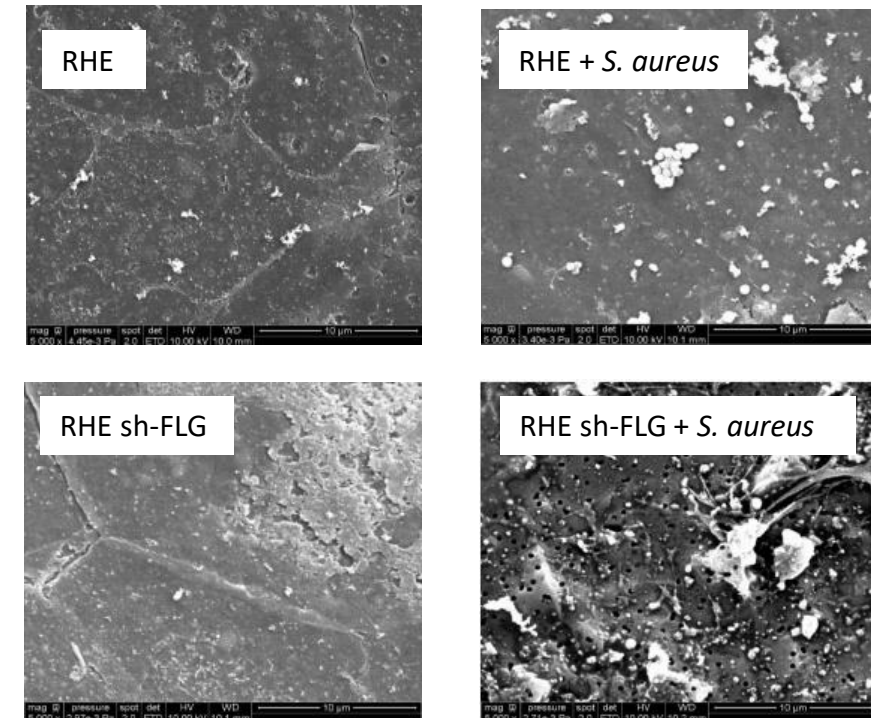
Customized service for human atopic skin reconstruction



RHE in default infected or not with *S. aureus*



S. aureus inoculum impact on RHE and RH-FLG morphology



S. aureus inoculum impact on RHE and RHE-FLG morphology SEMX5000

THANK YOU

Laboratories

Bioalternatives France

Gençay, FR

+33 (0)5 49 36 11 37

info@bioalternatives.com

Synelvia, France

Labège, FR

+33 (0)5 61 28 71 60

contact@synelvia.com

Sales offices

Bioalternatives Brazil - WQS

Botucatu, BR

info@bioalternatives.com

QIMA US

Buffalo, NY, USA

info.us@bioalternatives.com



Synelvia
Your Partner in Innovation

Bioalternatives
Your Partner in Innovation