



**EPISKIN, leader de  
l'ingénierie cutanée**  
pour une évaluation sans animaux

# EPISKIN HISTORY



**EPISKIN**

**1990**

**1994**

**2000**

**2006**

**2010**

**2011**

**2011**

**2014**

**2018**

**2019**

Collaboration agreement L'Oréal - Imedex

Marketing 1<sup>st</sup> EpiSkin epidermis kit

New facility in Lyon / Gerland

EPISKIN acquires SKINETHIC

Opening of Predictive Evaluation Center

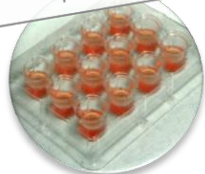
Creation of the EPISKIN Academy

EPISKIN / SkinEthic / EPISKIN biomat. merger

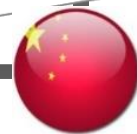
SkinEthic HCE in China

Creation of EPISKIN Brazil

**imedex**  
**L'ORÉAL**  
Research & Innovation



**EPISKIN**  
ACADEMY



**SKINETHIC**  
TISSUE CULTURE LABORATORIES

**1992**

**2000**

**2006**

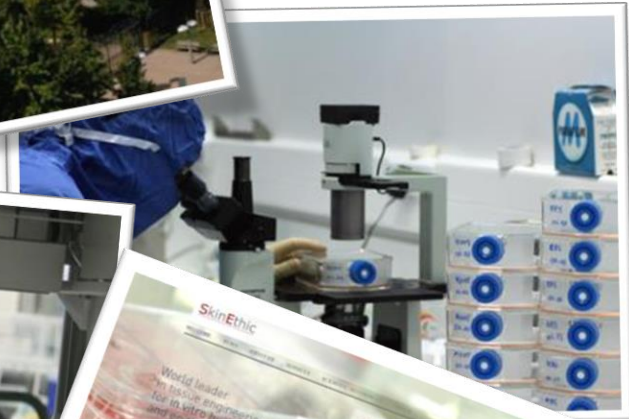
2000m<sup>2</sup> extension & SkinEthic moves to Lyon  
**SkinEthic**  
laboratories

Inception of SkinEthic Marketing RHE model

HCE & RHPE models on the market



# EPISKIN FIGURES



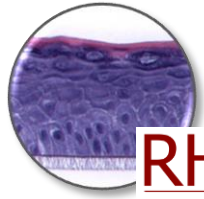
- 70 employees
- 3670 m<sup>2</sup> net area
- ISO 6 & ISO 7 clean rooms
- Biology laboratories
- Unique Business Model (SA)

Production/Sales + R&D + Evaluation

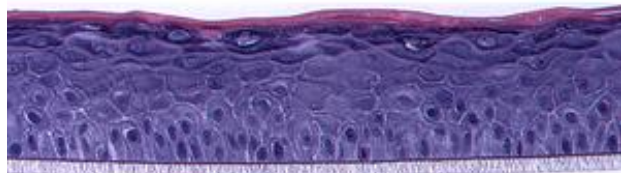
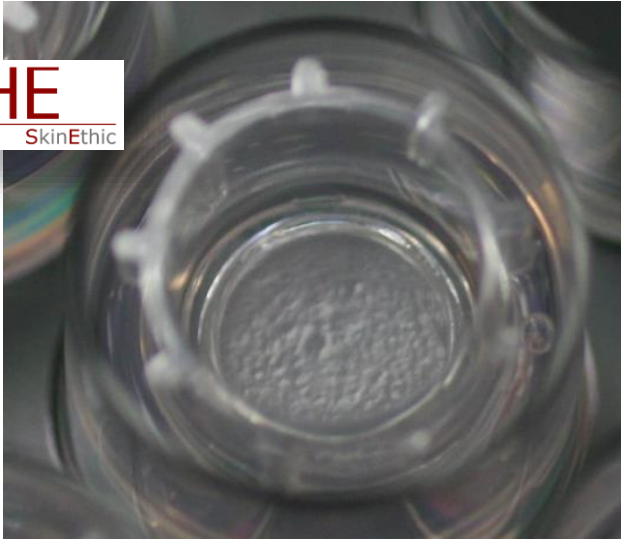


# PRODUCTION

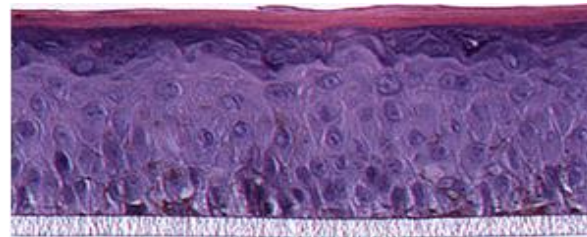
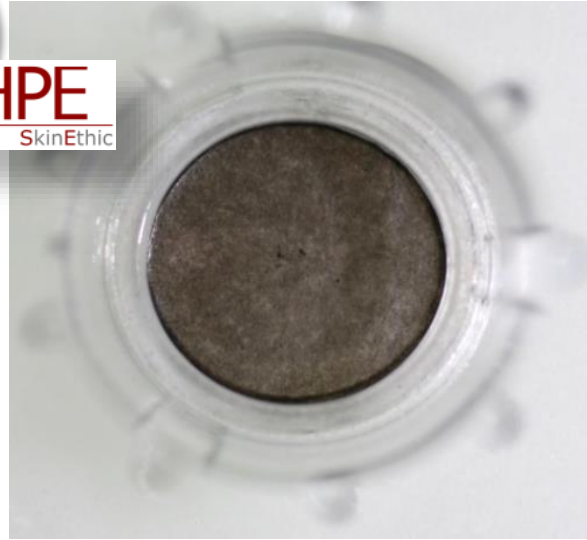
## TISSUE RECONSTRUCTION



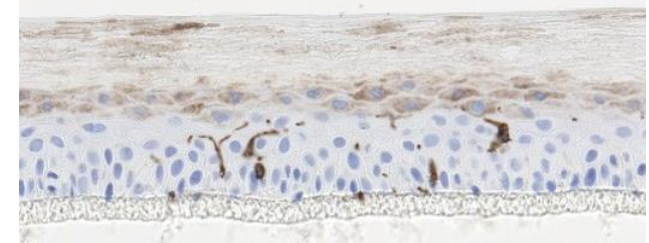
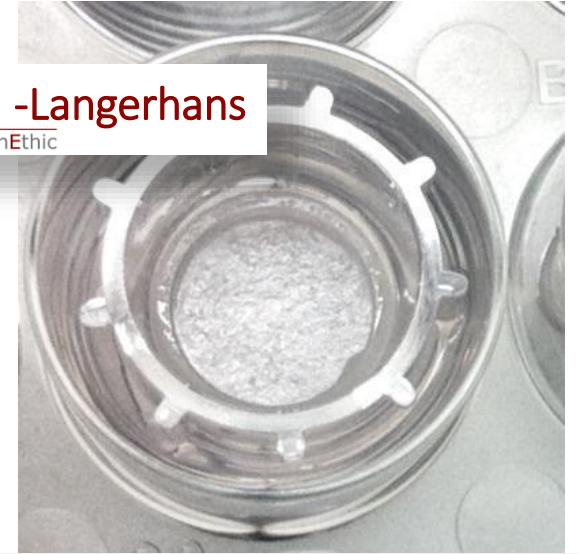
**RHE**  
SkinEthic



**RHPE**  
SkinEthic

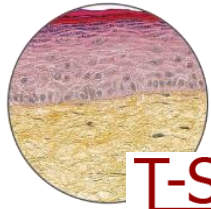


**RHE -Langerhans**  
SkinEthic

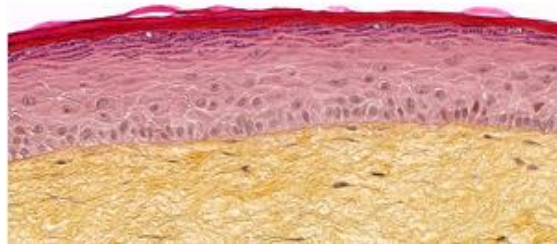
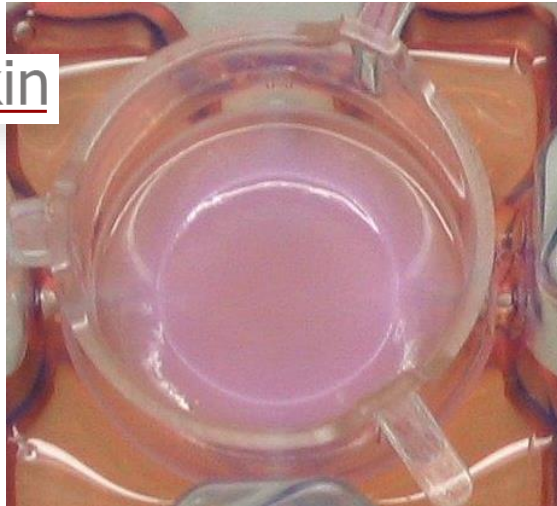


# PRODUCTION

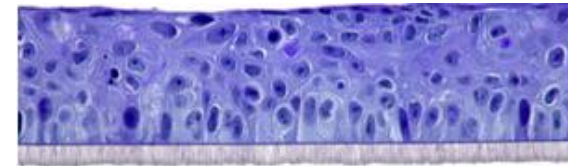
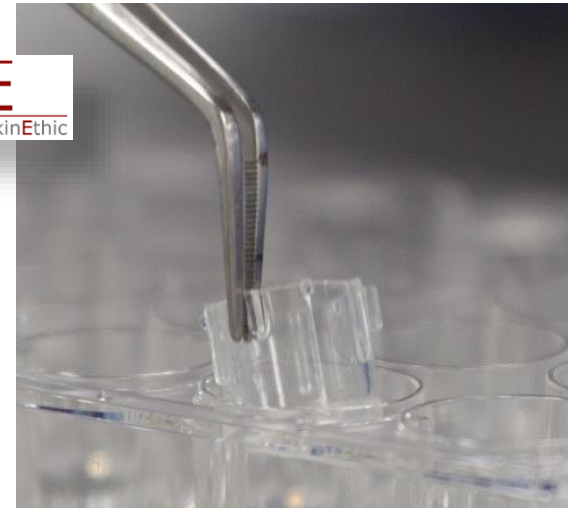
## TISSUE RECONSTRUCTION



T-Skin

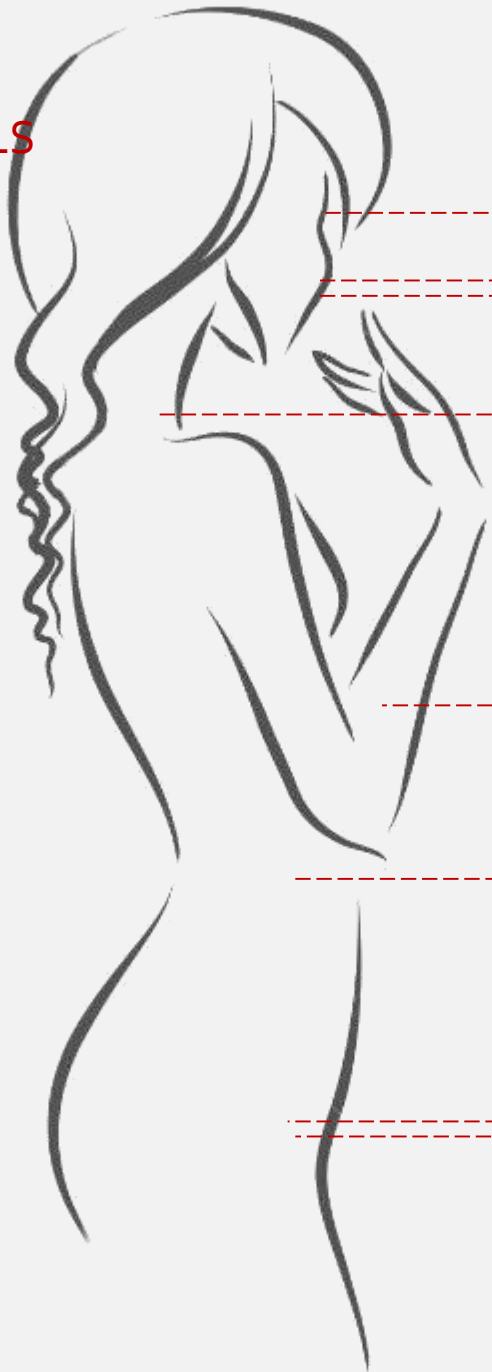


HCE  
SkinEthic



# EPIKIN

## THE TISSUE MODELS



HCE - CORNEAL EPITHELIUM  
TG 492 for eye irritation




- HOE - ORAL EPITHELIUM
- HOEE - ESOPHAGEAL EPITHELIUM
- HGE - GINGIVAL EPITHELIUM




EPIDERMIS

EpiSkin  
RHE  
RHPE  
RHE immuno



TG 431 & 439 for skin corrosion and irritation



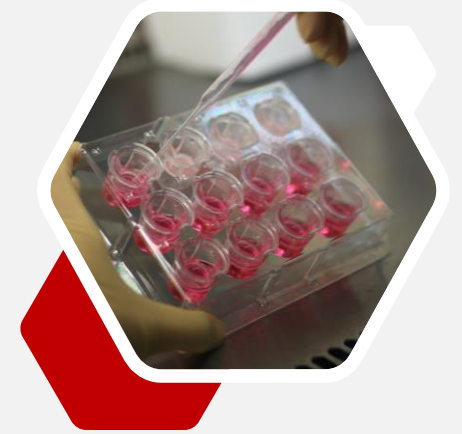
FULL THICKNESS SKIN  
(EPIDERMIS+DERMIS)

T-Skin™

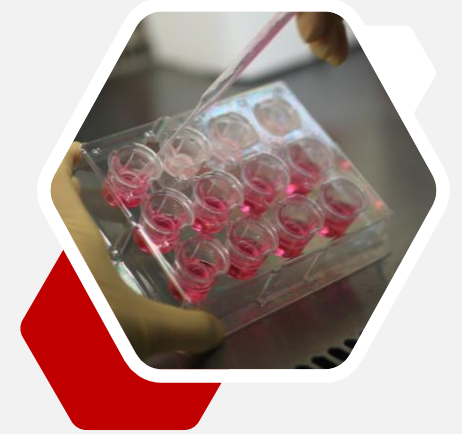
- HVE - VAGINAL EPITHELIUM
- HBE - BLADDER EPITHELIUM



# APPLICATIONS



# APPLICATIONS





# APPLICATIONS



Homeostasis UV effects  
Basic research Aging  
Microbiota

Screening safety Penetration  
ADME  
Phototoxicity

Screening efficacy

Anti-aging  
Anti-inflammatory  
Photoprotection  
Microbiota modulation

Formulation optimization

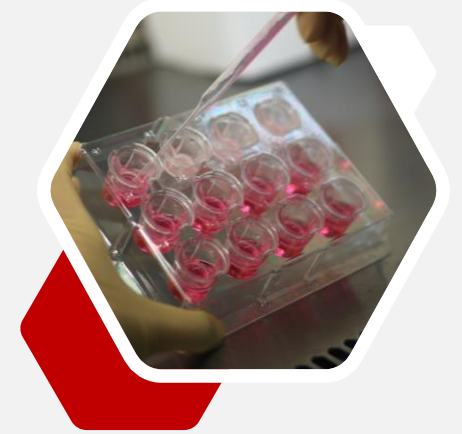
Penetration  
bioavailability

Tolerancy

Cream/gel  
Shampoo  
Perfume

Regulatory toxicology: hazard

- Skin corrosion/irritation  
- Eye irritation 
- Phototoxicity 
- Skin sensitization 
- Genotoxicity 



# CONCLUSIONS

Production industriel



Quantité/Qualité



Disponibilité

Support utilisateur

Engagement/convictions





**Merci de votre attention**

✉ [cpellevoisin@episkin.com](mailto:cpellevoisin@episkin.com)

🔗 [www.episkin.com](http://www.episkin.com)